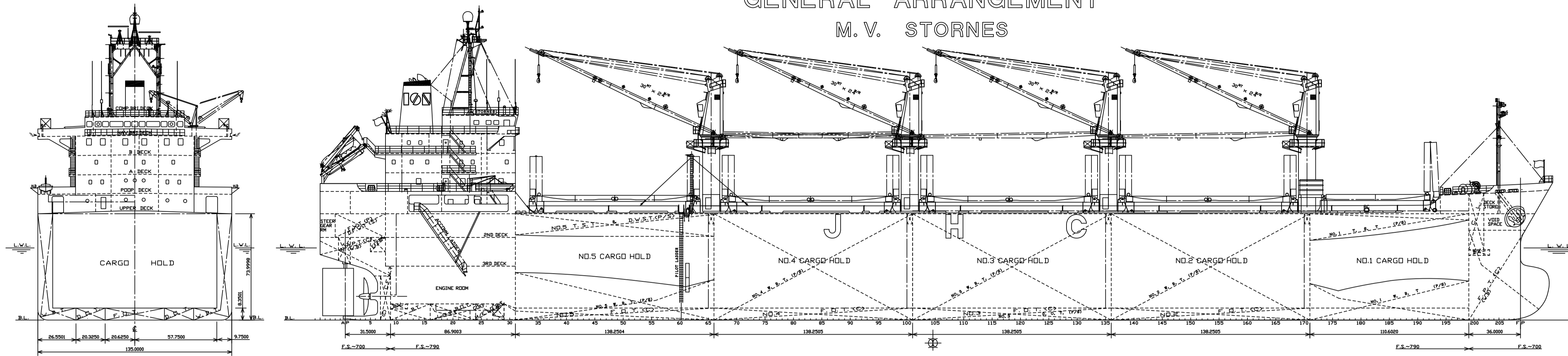


GENERAL ARRANGEMENT M.V. STORNES

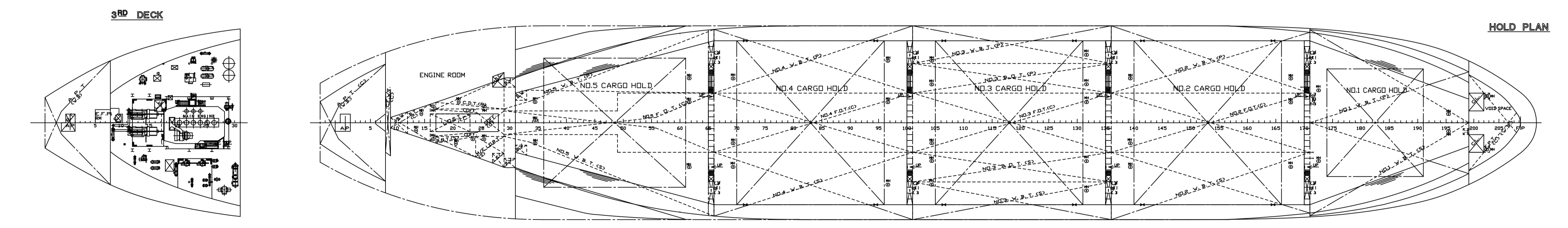
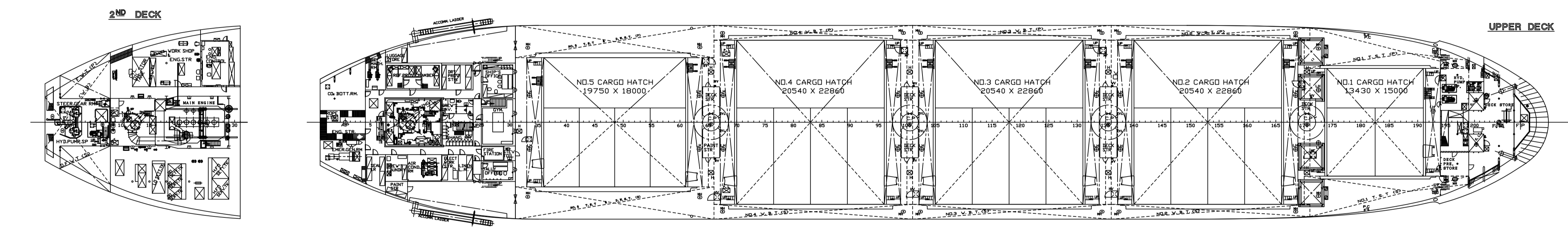
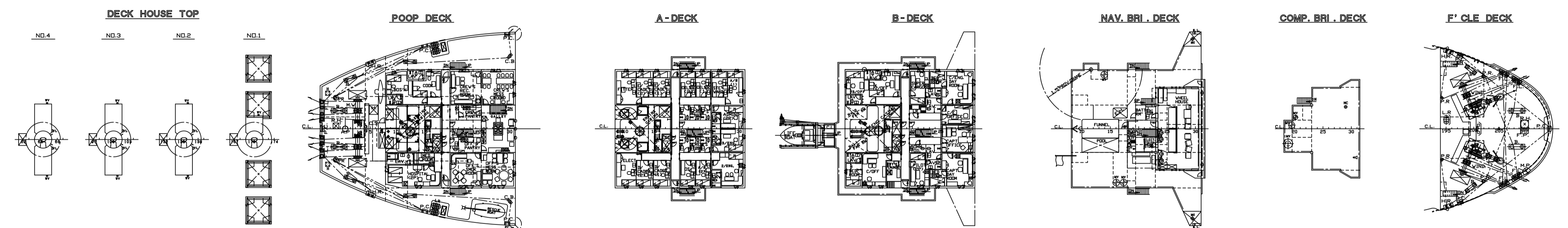


PRINCIPAL DIMENSIONS

LENGTH (O.A)	171.59M
LENGTH (P.P)	163.60M
BREADTH (M.L.D)	27.00M
DEPTH (M.L.D)	14.80M
DESIGNED DRAFT (M.L.D)	9.55M
SCANTLING DRAFT (M.L.D)	10.40M
GROSS TONNAGE	10,745
DEADWEIGHT (ds=10.4M)	31,921MT
MAIN ENGINE	MITSUBISHI 6UEC52LA
M.C.O.	0,600PS x 133rpm
C.S.O.	8,640PS x 128rpm
SERVICE SPEED (CSO, 15NSM, ds=10.4M)	14.5KT
CLASS	abt.

COMPLEMENT

DECK DEPART	ENG DEPART	BUSIN. DEPART
CAPTAIN 1	C/ENG 1	SUPERCAR 1
2/DFF	2/ENG	ADMINIST. 2
3/DFF	3/ENG	
TOTAL 10P		
OFFICERS 4		
SUBORDI 6		
TOTAL 14P		
PILOT 2P		
OFF'S SPARE 2P		
GRAND TOTAL 28P		



BIBLIOGRAPHY

11th Dec. 2000 Prepared by SAIKI

MUNDI SHIPPING CO., LTD.
D.W. 31,000' BOX SHAPED TYPE
BULK CARRIER

**GENERAL
ARRANGEMENT**

SHIP NAME	M/V STORNES
SHIP NO.	SH-1108
SCALE	1/200
SAIKI	
HEAVY INDUSTRIES CO., LTD.	
DESIGNING DEPT. HULL DSIN SEC	
DRAWN BY	
CHECKED BY	
SECT. CHIEF	
DEPT. CHIEF	
DATE DWG.	11 th DEC., 2000
DWG NO.	C 0 - 0 4